

# Texsteam Products

## Beam Driven Injection Pump

### Series 1200

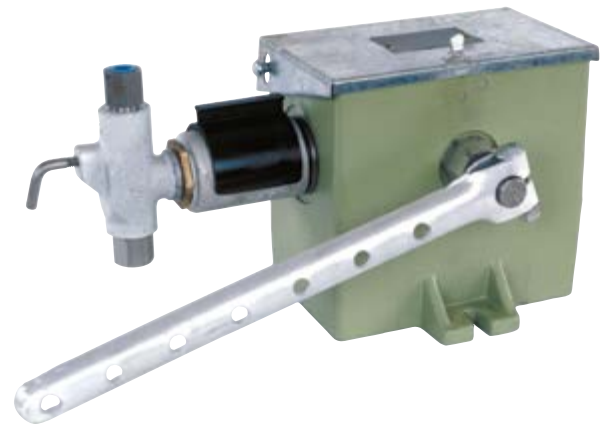
#### Description

Designed specifically for operation on a beam pumped oil well, the Texsteam Series 1200 Chemical Injection pumps are positive displacement type pumps powered by direct connection to the movement of a walking beam, rod line or rocker arm. The connection is made by a length of nominal pipe, or a wire line. The unit pumps on the upstroke of the beam action. On the downstroke, the injector arm returns to its set position. The ratchet mechanism is housed in a precision-bored, heavy cast gray iron case and is submerged in oil for long life.

The pump head design is efficient because of the horizontal plunger and vertical check valves; virtually trouble-free; easy to maintain; has stainless steel trim in standard heads; and a built-in to aid in priming, check pump action and catch chemical samples and external packing gland.

The box assembly is heavy cast gray iron for maximum rigidity and has a galvanized lid and rigid galvanized lever arm. The pump head can be easily removed for cleaning and maintenance. An additional pump head can be installed if more volume is required or if there is a need to pump dissimilar fluids.

A wide choice of model and plunger sizes is available. The Series 1200 can be supplied with or without unitized chemical tanks or with two mounted tanks or with tanks of various capacity and materials to suit the operating requirements.



#### Performance Data

Plunger Size	Maximum Pressure	Volume Pints per Day		Model Number
		Min.	Max.	
3/16"	3000#	.5	4.4	1204
1/4"	1500#	.5	7.2	1201
3/8"	1000#	.5	18.0	1203
1/2"	500#	1.0	30.0	1205

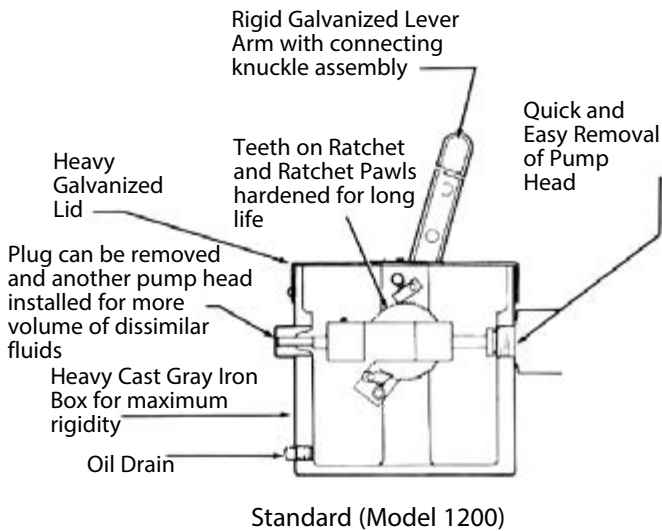
<sup>1</sup>For volumes with additional ratchet teeth engaged, multiply these values by number of teeth engaged.

20 Teeth Maximum Pickup. Minimum Volumes are theoretical only.

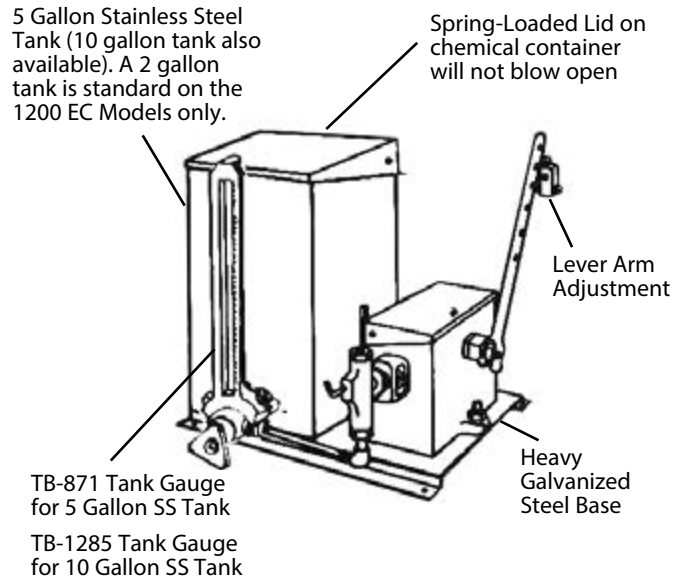
**NOTE: For double-headed units, increase maximum volume by two. Series 1200 EC equipped with one head only.**

Strokes Min.	Ratchet Teeth Engaged	3/16" Plunger			1/4" Plunger			3/8" Plunger			1/2" Plunger		
		Short Stroke	Med. Stroke	Long Stroke	Short Stroke	Med. Stroke	Long Stroke	Short Stroke	Med. Stroke	Long Stroke	Short Stroke	Med. Stroke	Long Stroke
6	1	.02	.05	.07	.04	.08	.12	.10	.20	.30	.17	.35	.5
8	1	.03	.07	.10	.06	.10	.16	.14	.26	.40	.23	.47	.7
10	1	.04	.08	.12	.07	.13	.20	.17	.33	.50	.29	.59	.8
12	1	.05	.10	.15	.08	.16	.24	.20	.40	.60	.35	.71	1.0
14	1	.06	.11	.17	.10	.18	.28	.24	.46	.70	.40	.83	1.2
16	1	.07	.13	.20	.11	.21	.32	.27	.53	.80	.46	.94	1.4
18	1	.08	.15	.22	.13	.23	.36	.31	.59	.90	.52	1.06	1.5

## Box Assembly



## General Assembly



## Models Available

Standard Model Number

Single Pump Head and 2 Gallon SS Tank ..... 1203 EC

Single Pump Head and Single 5 Gallon Tank ..... 1203 S  
(Specify SS or Plastic Tank)

Double Pump Head and Double 5 Gallon Tank ... 1203 D  
(Specify SS or Plastic Tanks)

Single Pump Head (No Tank or Base) ..... 1203 SP

Double Pump Head (No Tank or Base) ..... 1203 DP

### Plunger Sizes

Model numbers shown are equipped with 3/8" plunger size. Other sizes available are 3/16", 1/4", and 1/2".

### Choice of Material

Ductile Iron Body with stainless steel trim (standard)

All Stainless Steel Head (optional)

### Options Available

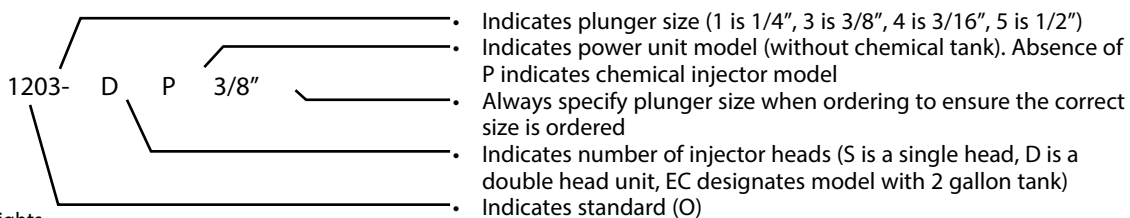
Teflon or Viton Packing

Resilient seats (standard on all heads)

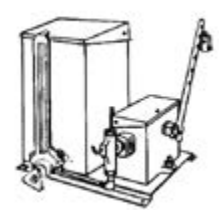
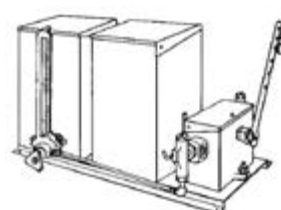
Hastelloy balls

Tanks, two, five and ten gallon capacity, 430 SS and 316 SS

## Model Designation



† shipping weights



## Industrial Products Group

### Texsteam Pumps

16240 Port Northwest Drive

Houston, TX 77041

T: 832-590-2306

Toll Free: 1-800-945-9898

F: 713-849-2879

The Dresser Logo and all Trademarks containing the term "Dresser" are the property of Dresser, LLC, a subsidiary of Baker Hughes, a GE Company.



www.dresserngs.com

Texsteam 1200 Series Fact Sheet NGS.IPG.0012